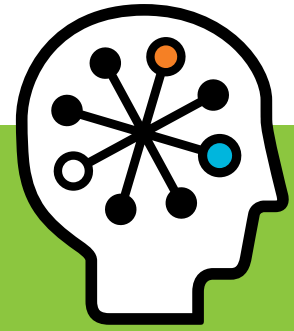




## HP ProLiant DL120 G6 Server

Data sheet



The HP ProLiant DL120 G6 Server is a right-sized, right-priced solution configured to meet the varying application demands of your data center.

The HP ProLiant DL120 G6 Server is an enterprise-class entry rack server ideal for dedicated Web and Edge applications. Built using the latest industry-standard technologies, it delivers affordable performance for scale-out applications and provides essential features for varied computing needs.

The DL120 G6 server supports Intel Xeon processors, in addition to all the performance advantages of a quad-core architecture. An array of Intel Xeon quad-core processors gives you the option to choose the appropriate processor based on application demands and costs.

As a single processor 1U server, the DL120 G6 server provides two PCI Express slots with an optional third x4 PCI slot. Additional upgrades, including

HP SAS HBAs and Smart Array Controllers, provide support for SAS hard disk drives. In addition, the HP LO100i is a remote management feature that helps you manage your servers remotely.

An ideal solution for growing businesses, the DL120 G6 server delivers expandability through a mix of PCI and PCI-Express slots, DIMM slots, drive bays, and server options. The Integrated LO100i remote management reduces physical visits to servers, thus cutting down operational costs. An updated version of the HP Easy Set Up CD eases the installation process. Optional Trusted Platform Module (TPM) provides an additional level of security. And the standard power supply is now more efficient, enabling you to reduce power consumption.

# Key features and benefits

## Right-sized, right-priced solution

- Variable cost Intel Xeon Quad-Core processors enable you to pick the right processor based on workload requirements
- Server supports large form factor SATA and SAS hard disk drives that combine low-cost benefits, high capacity, high performance, and high reliability, all at the same time
- HP Embedded 6 Port SATA Controller and an array of SAS HBAs and Smart Array Controllers
- Scalable performance with six DIMM sockets with support for buffered and registered ECC memory

## Ease of management

- Provides an easily accessible, rack-optimized 1U chassis for fast deployment and efficient maintenance
- Responds quickly to server issues with essential entry-level remote management, which is offered at an affordable price
- Offers browser and command line interface access

## Proven HP dependability and support

- Thorough testing processes make your HP ProLiant server dependable
- Full range of service and support for every budget, including startup, installation, extended warranty, network planning, and software updates
- Access to HP helpdesks and service professionals for round-the-clock support

## Ideal environments

- Environments running a technology infrastructure or Edge applications such as file/print, Web and messaging, smaller vertical applications, or dedicated application server.
- Small and medium entry-level, budget-conscious businesses that need a single processor server solution with cost-effective SATA hard drives.
- Growing companies with remote locations or collocated servers. The 1U chassis increases density while keeping power consumption to within pre-determined limits—a concern for upcoming data centers.

# What's new?

- Latest quad-core Intel Xeon 3400 series processors provide better and faster system performance
- Support for DDR3 1066/1333MHz unbuffered ECC memory offers approximately 10% performance gain over DDR2 and support for DDR3 800/1066/1333 registered memory
- Support for PCI-e Gen2 x16 link provides better flexibility to deploy the PCIe option
- Standard power supply with 80% efficiency helps reduce overall operational costs
- Optional TPM 1.2 support offers better data security with hardware-based encryption and authentication
- Integrated remote management with LO100i provides standard remote management capability with optional advanced features

# Why HP?

## Leadership

HP has one of the world's largest and most specialized forces of consultants combined with a broad choice of technology platforms in the industry.

## Industry expertise

The HP solution is based on cost-effective industry standard technology that can be easily integrated and can scale-up with the potential to support millions of users. HP provides comprehensive, end-to-end solutions, including hardware, software, and services.

## Open standards

The HP solution is modular and built on open standards. This encourages a high degree of customization to fit your specific needs and requirements.

## Management

HP offers unique products and solutions, proven methodology, and full lifecycle service capabilities to manage your project—from business requirements to implementation.

## HP ProLiant DL120 G6



<b>Processor Type</b>	Intel® Xeon® processor X3400 series Intel® 3420 Chipset
<b>Available Processors</b>	Intel® Xeon® processor HP X3430 (2.40GHz, 95W, 8MB, 1333, Turbo) Intel® Xeon® processor HP X3440 (2.53GHz, 95W, 8MB, 1333, HT, Turbo) Intel® Xeon® processor HP X3450 (2.67GHz, 95W, 8MB, 1333, HT, Turbo) Intel® Xeon® processor HP X3460 (2.80GHz, 95W, 8MB, 1333, HT, Turbo) Intel® Xeon® processor HP X3470 (2.93GHz, 95W, 8MB, 1333, HT, Turbo)
<b>Processor Core</b>	Quad core
<b>Processor Cache</b>	Integrated 1x8MB Level3 Intel® Smart Cache
<b>Max Processor Speed</b>	2.93GHz
<b>Management</b>	LO100i; System setup and update, health agents, SIM support
<b>Multi-processor</b>	1
<b>Max Front Side Bus Speed</b>	1333 MHz
<b>Memory Type</b>	32GB PC3-10600 (DDR3-1333MHz)
<b>Standard Memory</b>	
<b>Max Memory</b>	Support up to 16GB DDR3 1066/1333 unbuffered ECC DIMM or 32GB DDR3 800/1066/1333 Registered DIMM
<b>Advanced Memory Protection</b>	ECC
<b>Storage</b>	
<b>Storage Type</b>	3.5" Hot Plug SAS 3.5" Non-Hot Plug SATA
<b>Hard Drives Supported</b>	Up to 4 non-hot plug SATA/SAS 3.5" drives supported
<b>Max Internal Storage</b>	3.0TB
<b>Max Internal Devices</b>	2
<b>Removable Media Bays</b>	1
<b>Expansion Slot</b>	3 total (1) Full length PCI Express Gen 2 x16 slot (x16 connector) (1) Half-length, low-profile PCI Express x4 slot (x8 connector) (1) PCI-Express Gen 1 x1 (x4 connector)
<b>Storage Controller</b>	Integrated 6 Port SATA (4 ports available for hard disks)
<b>Deployment</b>	
<b>Form Factor</b>	Rack
<b>Rack Height</b>	1U
<b>Networking</b>	Embedded HP NC107i PCI Express Gigabit Server Adapter
<b>Remote Management</b>	Lights-Out 100i
<b>Warranty</b>	3-year, next day parts replacement

# Smartest way to invest in technology

HP Financial Services provide innovative financing and financial asset management programs to help you cost effectively acquire, manage, and ultimately retire your HP solutions. For more information on these services, please contact your local HP representative or visit: [www.hp.com/go/hpfinancialservices](http://www.hp.com/go/hpfinancialservices)

## For more information

For more information about the HP ProLiant DL120 G6 Server, contact your local HP representative, or visit: [www.hp.com/servers/dl120-g6](http://www.hp.com/servers/dl120-g6)

## HP Services

### When Technology Works. Business Works.

The challenge of virtually every technology organization is similar: To develop and maintain an agile, efficient server infrastructure that delivers the service levels your business needs. HP Technology Services offer a comprehensive portfolio of HP Care Pack Services to help design, deploy, manage, and support your technology environment, enabling cost-effective upgrades to standard warranty with easy-to-buy, easy-to-use support packages.

### Minimum Recommended HP Care Pack offerings

- Three-year, next business day response onsite 9-hour x 5-day coverage, hardware support
- Hardware Installation only

### Enhanced service level Care Pack offerings

- Three-year same business day 4-hour response onsite 13-hour x 5-day coverage, hardware support
- Hardware Installation plus operating system installation and startup

### Benefit from HP Care Pack Services helping you:

- Reduce deployment time and manage ProLiant server solutions smoothly and efficiently.
- Increase uptime and performance of servers availability to your business.
- Detect, diagnose, and repair problems to quickly save time, money, and resources.

For more information, visit

[www.hp.com/services/proliantservices](http://www.hp.com/services/proliantservices) or [www.hp.com/go/proliant/carepack](http://www.hp.com/go/proliant/carepack)



## Get connected

[www.hp.com/go/getconnected](http://www.hp.com/go/getconnected)

Current HP drivers, support & security alerts delivered directly to your desktop

## Technology for better business outcomes

To learn more, visit [www.hp.com/servers/dl120-g6](http://www.hp.com/servers/dl120-g6)

© Copyright 2009 Hewlett-Packard Development Company, L.P. The information contained herein is subject to change without notice. The only warranties for HP products and services are set forth in the express warranty statements accompanying such products and services. Nothing herein should be construed as constituting an additional warranty. HP shall not be liable for technical or editorial errors or omissions contained herein.

4AA2-9641ENW, October 2009

